

ONWA[®]

MARINE ELECTRONICS



MODEL

KMR-6

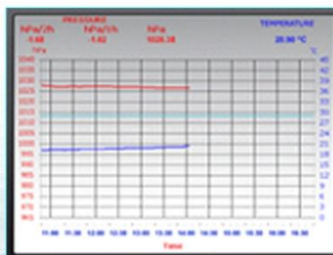
5.6-inch Multi-Function Display with NMEA Multiplexer

- Can accept most major NMEA0183 sentences
- Provides 5 input ports and 2 output ports
- 6 display modes show the input NMEA0183 sentences in digital and graphic modes
- Mix and combine all 5 input NMEA0183 sentences into 2 outputs
- Weather alarm mode monitors the change of weather temperature and air pressure
- 4 input ports are opto-isolated

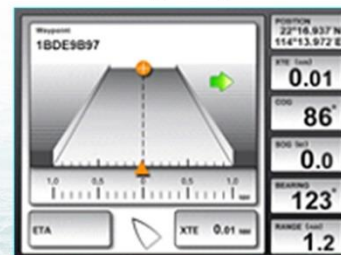
Wind



Weather



Highway



Compass



AIS



Gauges



SPECIFICATIONS

Outout/Input (IEC61162-1)

**Input: 5x
NMEA0183**

Input port 1

- a) Support sentences: AAM, APB, BOD, BWC, DBT, DPT, GGA, GLL, GSA, GSV, HDG, MTW, MWV, RMB, RMC, VHW, VTG, WPL, XTE, ZDA, HDM, HDT, MWD, VPW, VWR, VWT, XDR, ZDL.
- b) Baudrate: auto scan up to 38400
- c) Electrical: opto-isolated

Input port 2

- a) Support sentences: AAM, APB, BOD, BWC, DBT, DPT, GGA, GLL, GSA, GSV, HDG, MTW, MWV, RMB, RMC, VHW, VTG, WPL, XTE, ZDA, HDM, HDT, MWD, VPW, VWR, VWT, XDR, ZDL.
- b) Baudrate: 4800
- c) Electrical: opto-isolated

Input port 3

- a) Support sentences: AAM, APB, BOD, BWC, DBT, DPT, GGA, GLL, GSA, GSV, HDG, MTW, MWV, RMB, RMC, VHW, VTG, WPL, XTE, ZDA, HDM, HDT, MWD, VPW, VWR, VWT, XDR, ZDL.
- b) Baudrate: 4800
- c) Electrical: opto-isolated

Input port 4

- a) Support sentences: AAM, APB, BOD, BWC, DBT, DPT, GGA, GLL, GSA, GSV, HDG, MTW, MWV, RMB, RMC, VHW, VTG, WPL, XTE, ZDA, HDM, HDT, MWD, VPW, VWR, VWT, XDR, ZDL.
- b) Baudrate : 4800
- c) Electrical: opto-isolated

AIS input port 5

- a) Support sentences: AAM, APB, BOD, BWC, DBT, DPT, GGA, GLL, GSA, GSV, HDG, MTW, MWV, RMB, RMC, VHW, VTG, WPL, XTE, ZDA, HDM, HDT, MWD, VPW, VWR, VWT, XDR, ZDL, VDO, VDM
- b) Baudrate: 38400
- c) Electrical: RS232

**Output: 2x
NMEA 0183**

Output port 1

- a) Output sentences: mix of all inputs from Input port 1 through port 4
- b) Baudrate: 4800
- c) Electrical: RS232

Output 2

- a) Output sentences: mix of all inputs from Input port 1 through port 5
- b) Baudrate: 38400
- c) Electrical: RS232

Power Supply

Electrical: 10.5 – 35VDC
Power: 0.3A at 12VDC
Consumption Protection: Overcurrent, overvoltage, power transient and accidental reverse polarity protection

10.5 – 35VDC
0.3A at 12VDC
Overcurrent, overvoltage, power transient and accidental reverse polarity protection

Environmental Conditions

Ambient Temperature: -15°C to +55°C
Humidity: 93%±3% on 40°C
Waterproofing: IPX5

Equipment List

Standard:

Display unit KMR-6
Mounting brackets
Manuals (quick start and quick installation manual)
Standard accessories pack (one power cable, one data cable, 2 spare fuses, 4 mounting screws)

Optional:
KMR-JB

For easy wire connections from external equipment, user can order Junction box (KMR-JB) for KMR-6. KMR-JB has a clear label of all input and output ports with baud rate and polarity. For more details, please consult your local ONWA distributor



DIMENSIONS

